

## Endurance R/C PT-2.1

[www.endurance-rc.com](http://www.endurance-rc.com)



The Endurance R/C Pan and Tilt PT-2.1 base is a light weight pan and tilt system based around Hitec's line of waterproof servos: HS-646WP or the HS-5646WP. Featuring all around rigid ABS construction, the PT-2.1 base was designed for uses where moisture is an issue.

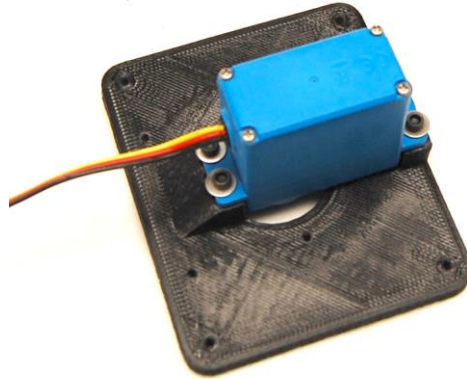
The base has also been redesigned to house ball bearings on the pan and tilt shafts for maximum load carrying capabilities. The PT-2.1 also features optional accessories for attaching a GoPro camera or to a tripod.

**Kit Contents:**

- 25x 1/4" ball bearings.
- 12x 4-40 socket head screws, .35" length
- 8x washers, (for 4-40 screws)
- 4x 6-32 (socket head) screws, .35" length
- 2x aluminum servo hub
- 1x 1/4x3/8" sealed ball bearing
- 1x tilt bracket
- 1x pan top
- 1x pan bottom

## Assembly Instructions

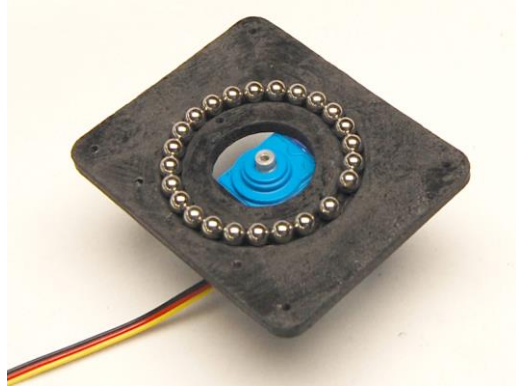
1. Attach a servo to the pan bottom plate with four 4-40 screws and washers.



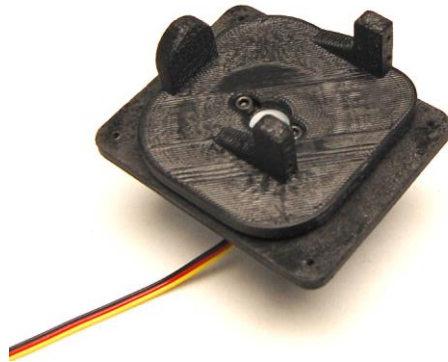
2. Attach an aluminum hub to the pan top with two 6-32 socket head screws.



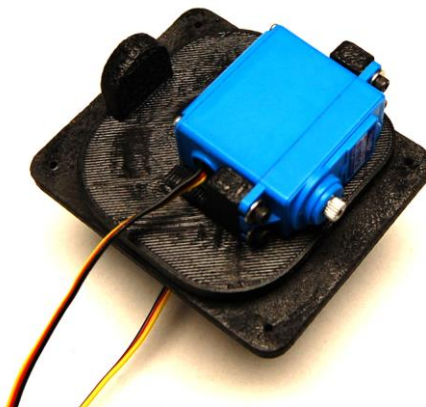
3. Place the ball bearings into the pan bottom assembly as shown. Be careful to keep the base still to prevent spillage.



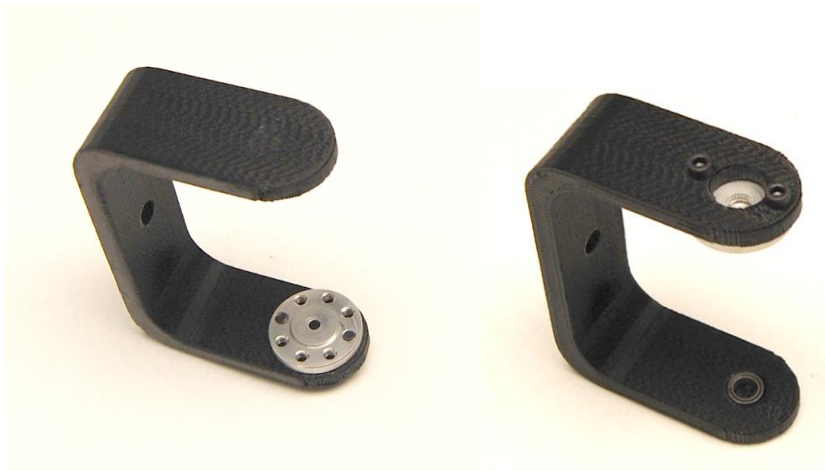
4. Center your servo and attach the pan top assembly to the pan bottom assembly. Check the alignment before proceeding.



5. Attach a servo to the pan assembly with four 4-40 screws and washers.



6. Attach an aluminum hub to the tilt bracket with two 6-32 socket head screws. Press the bearing into the hole on the inside (this is a very tight fit).



7. Insert the plastic nub (opposite of the servo hub) on the pan assembly into the tilt bracket. Bend the tilt bracket slightly to snap the hub on to the servo shaft.

